



## **ANNEX 1: MAPS**

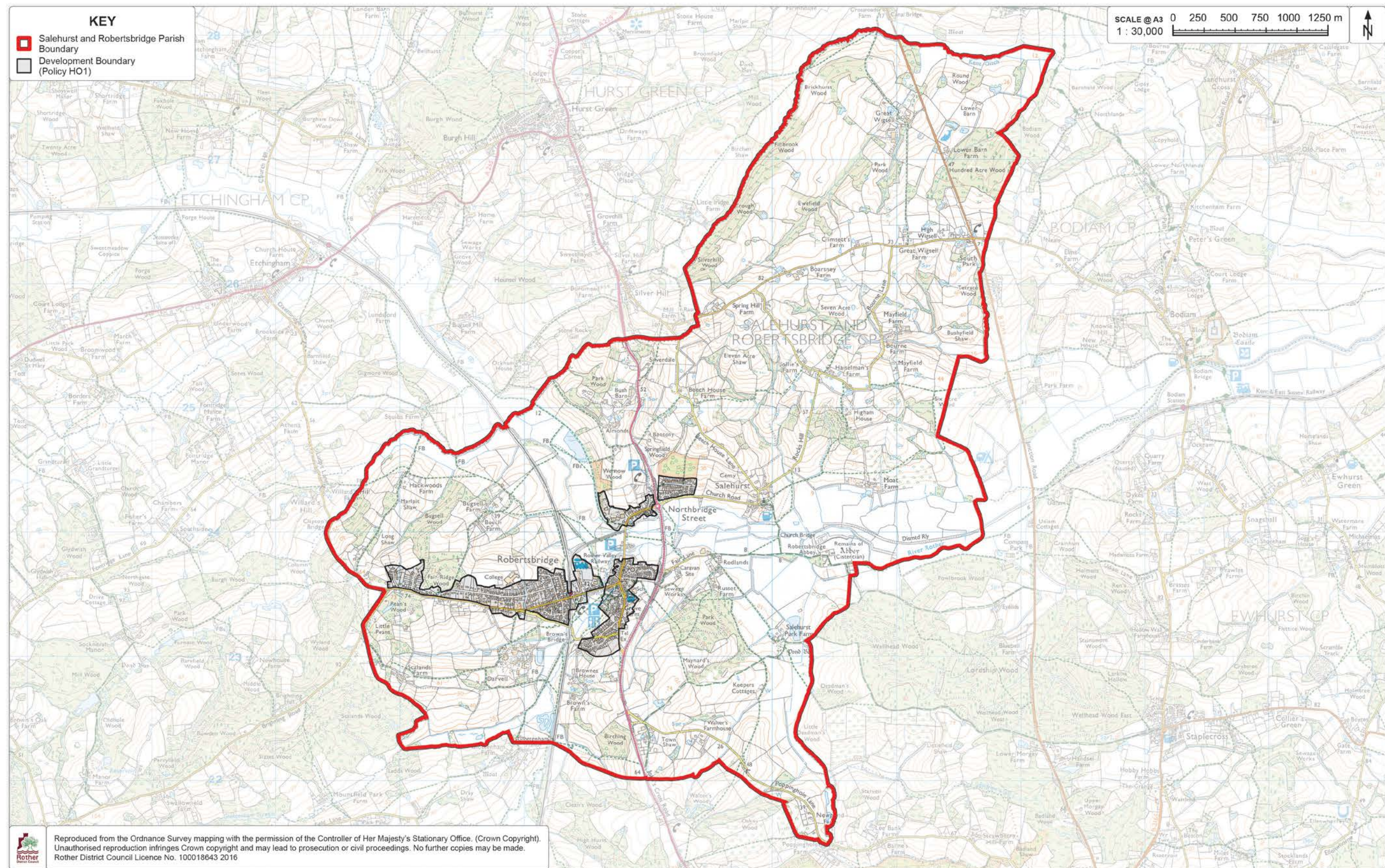
TO THE SALEHURST AND ROBERTSBRIDGE NEIGHBOURHOOD DEVELOPMENT PLAN  
**2016-2028**

April 2018

## TABLE OF CONTENTS

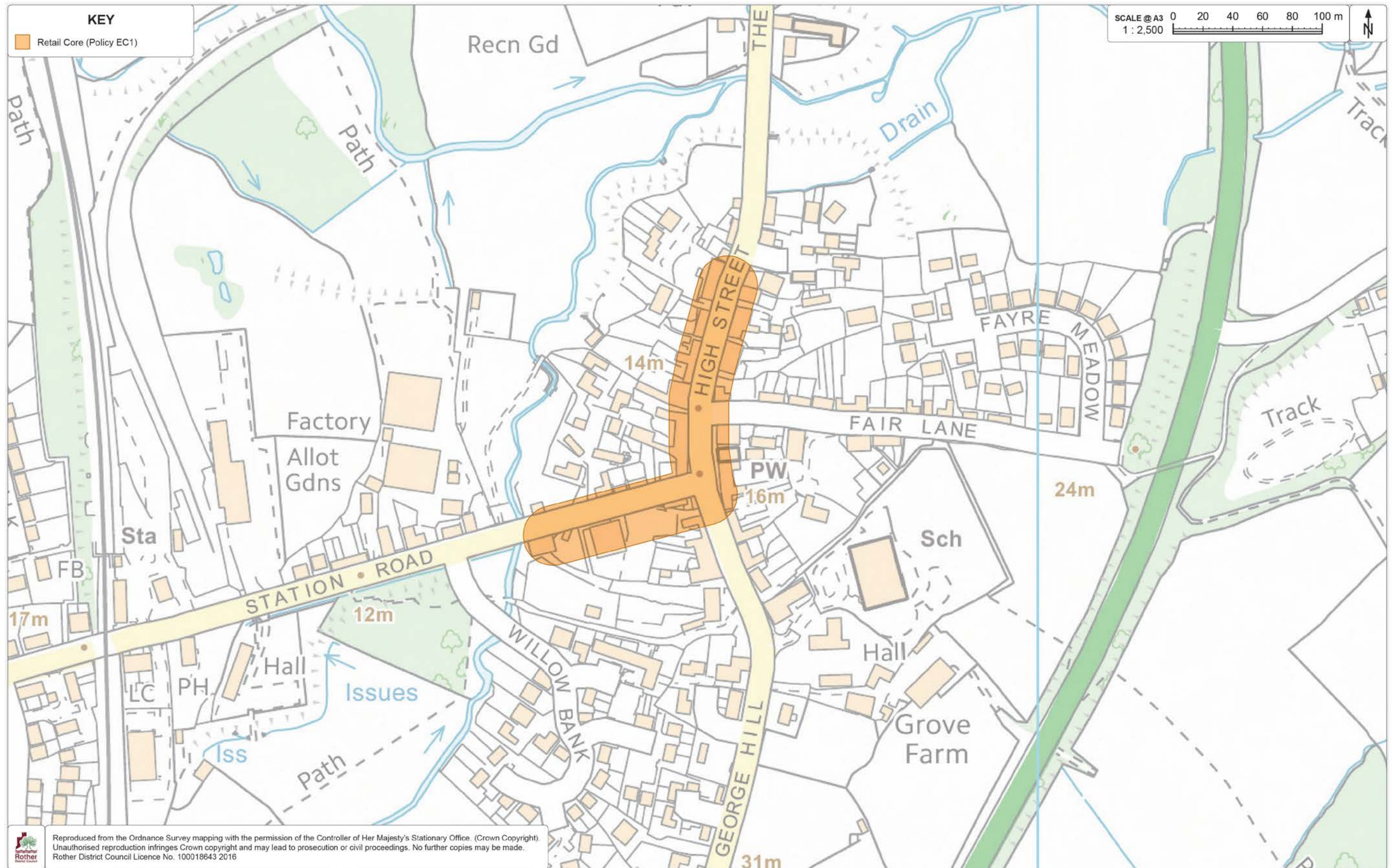
Map 1: Area Designation	<a href="#">[3]</a>
Map 2: Retail Core	<a href="#">[4]</a>
Map 3: Local Green Space Designations	<a href="#">[5]</a>
Map 4: Proposals Map	<a href="#">[6]</a>
Map 5: Accessibility	<a href="#">[7]</a>
Map 6: Flood Risk	<a href="#">[8]</a>
Map 7: Environment and Habitat Designations	<a href="#">[9]</a>
Map 8: Employment Areas	<a href="#">[10]</a>
Map 9: Historic Environment	<a href="#">[11]</a>
Map 10: Parks and Open spaces	<a href="#">[12]</a>
Map 11: Development Boundary	<a href="#">[13]</a>
Map 12: Locally important trees and hedgerows outside the Conservation Area	<a href="#">[14]</a>
Map 13: Locally important historic buildings and other structures	<a href="#">[15]</a>





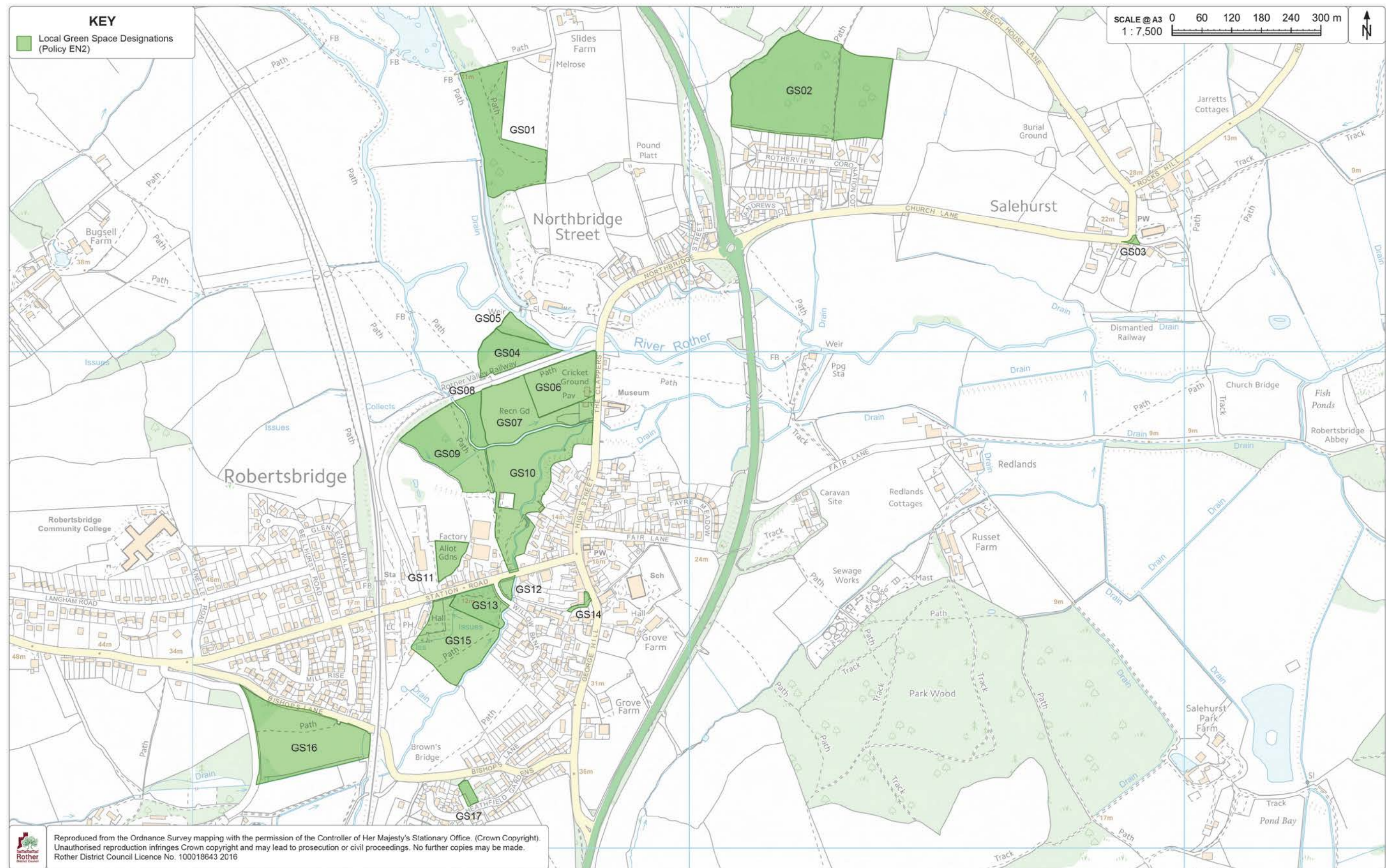
Map 1: Area Designation





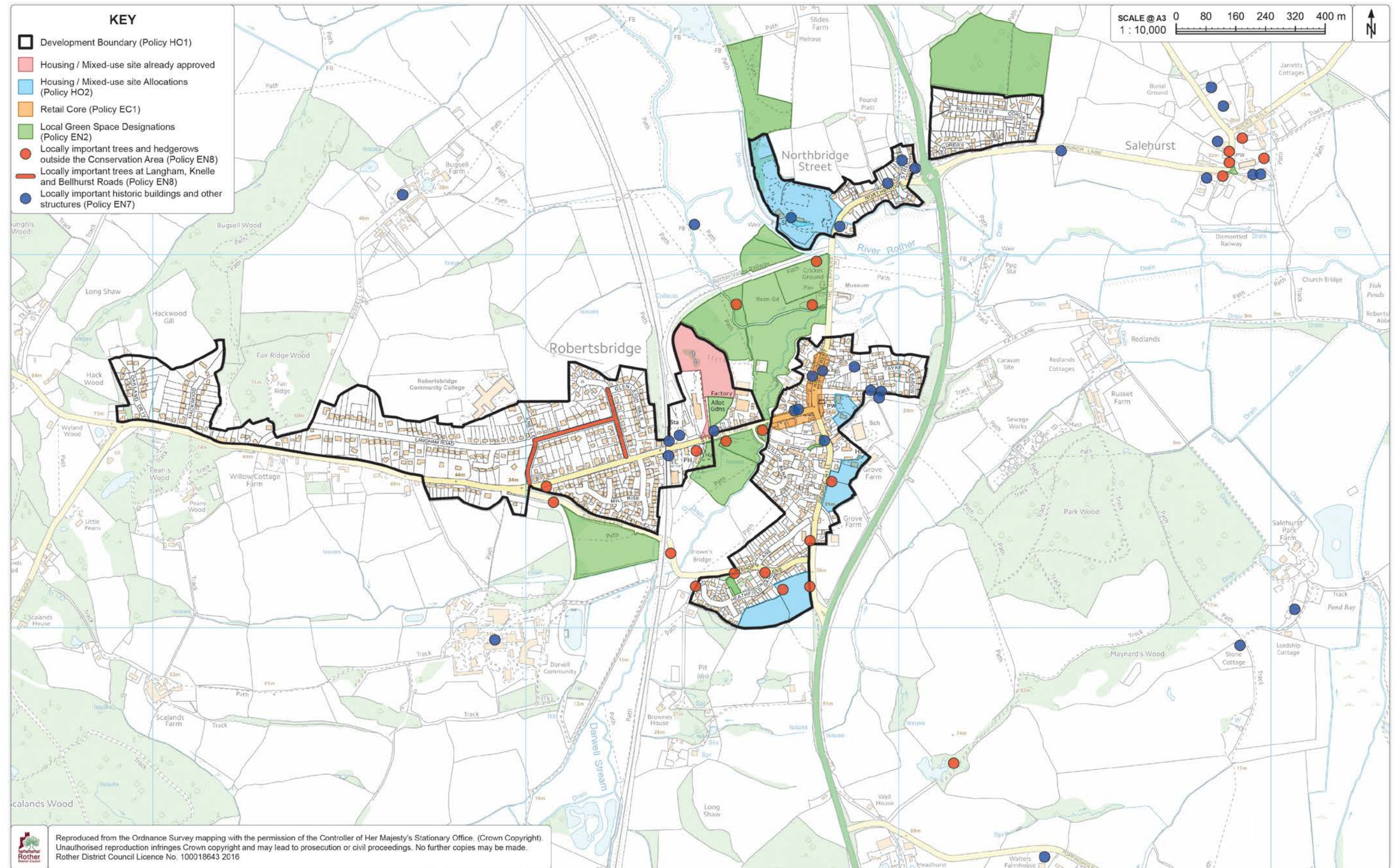
Map 2: Retail Core





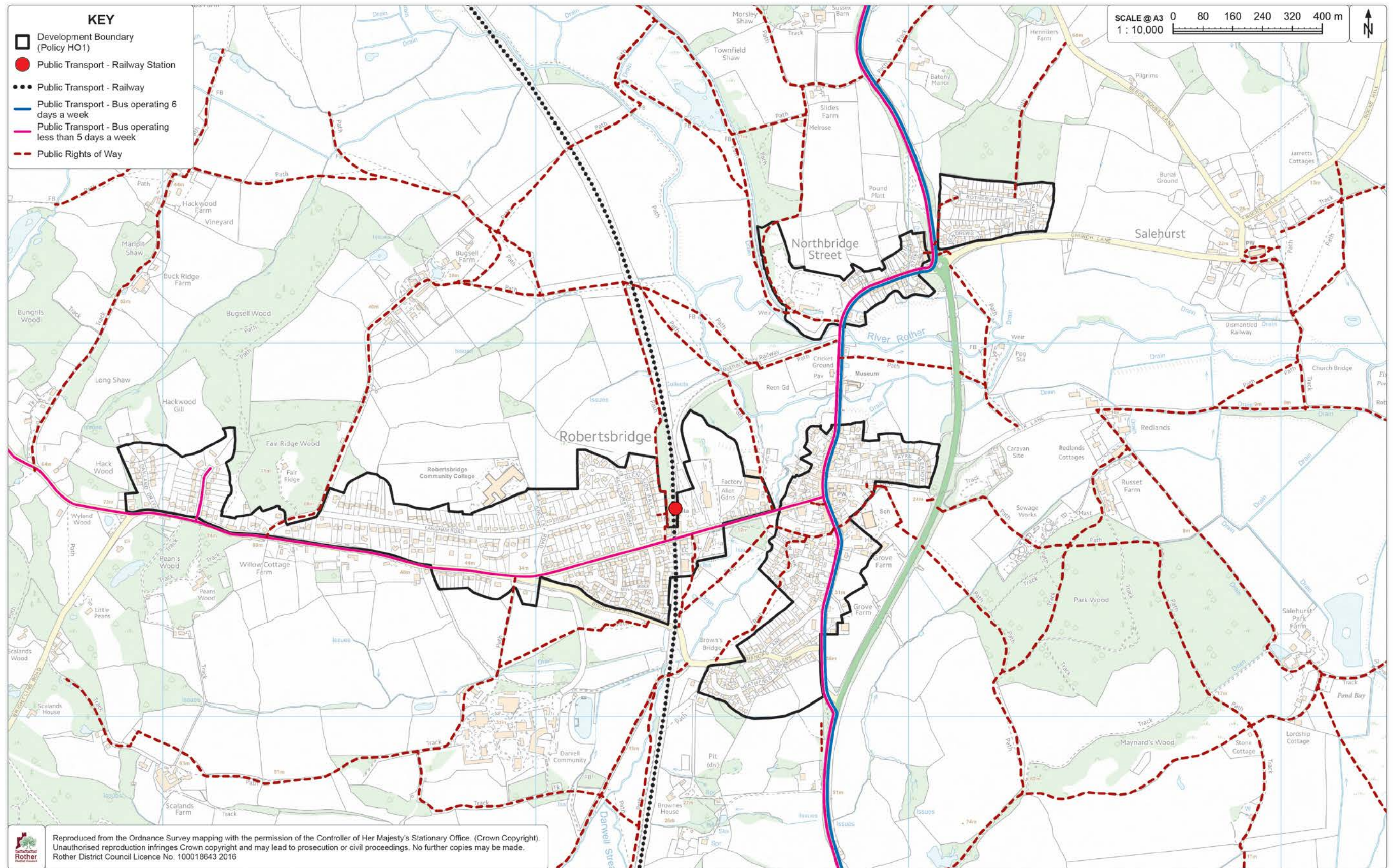
Map 3: Local Green Space Designations





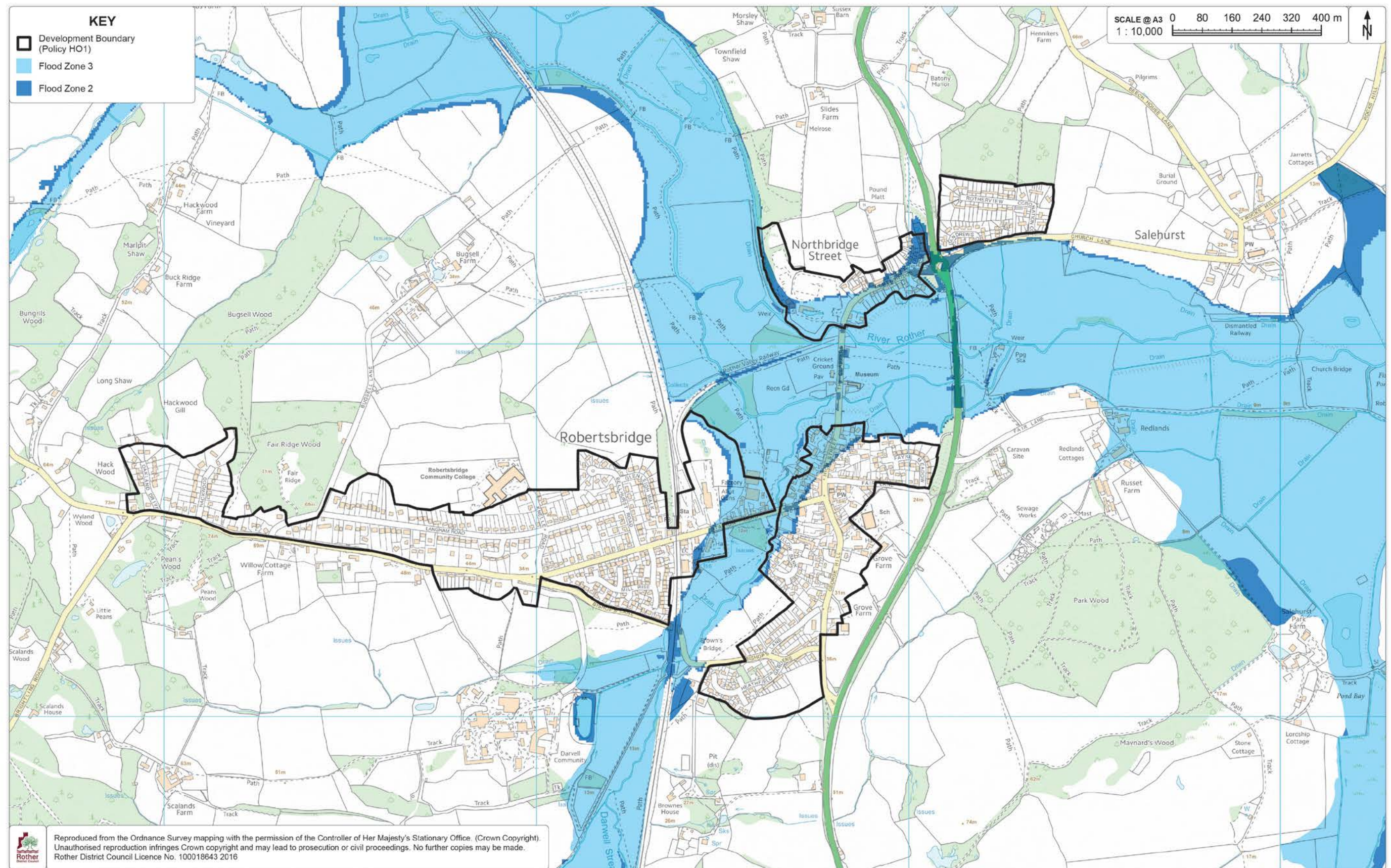
Map 4: Proposals Map





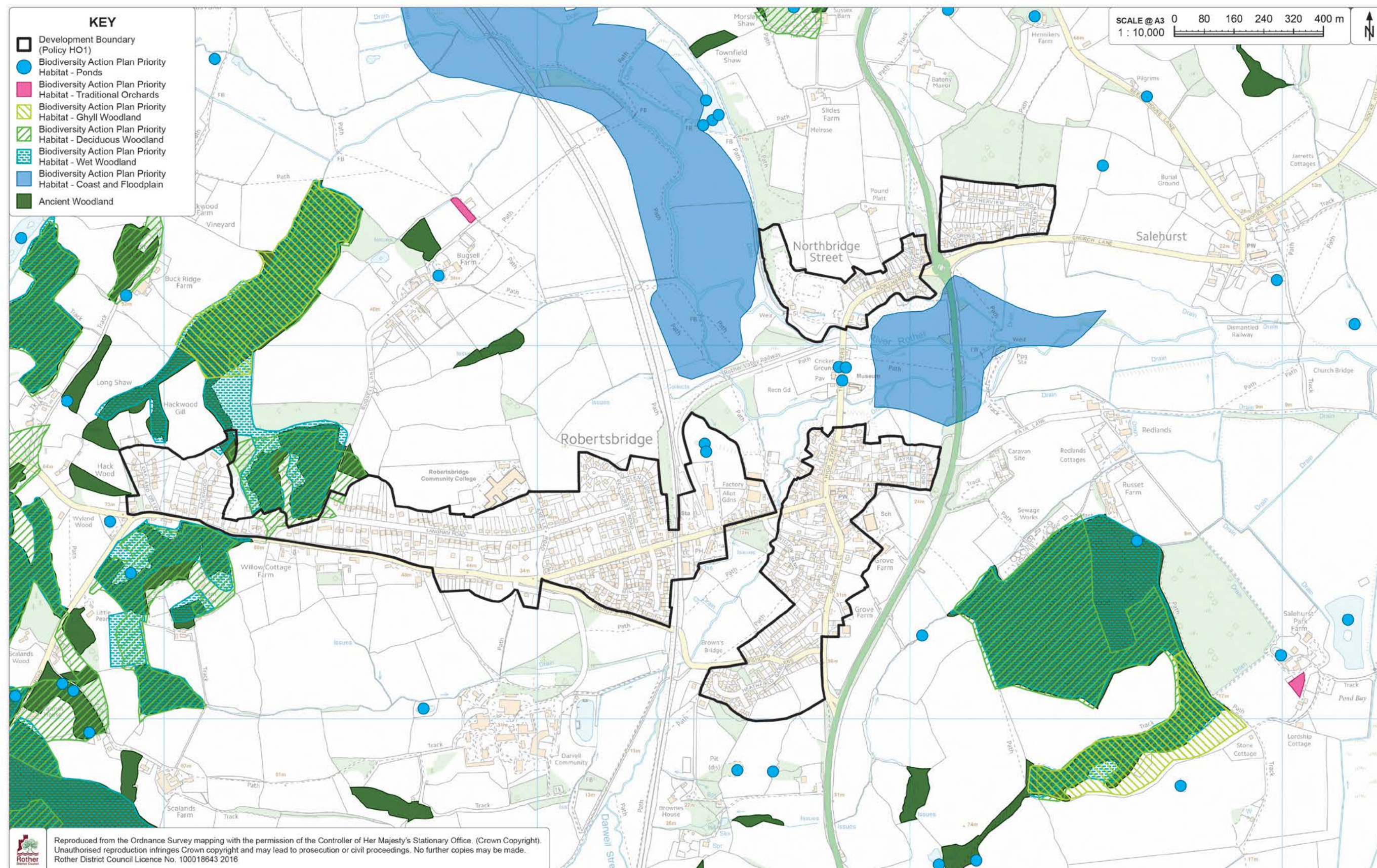
Map 5: Accessibility





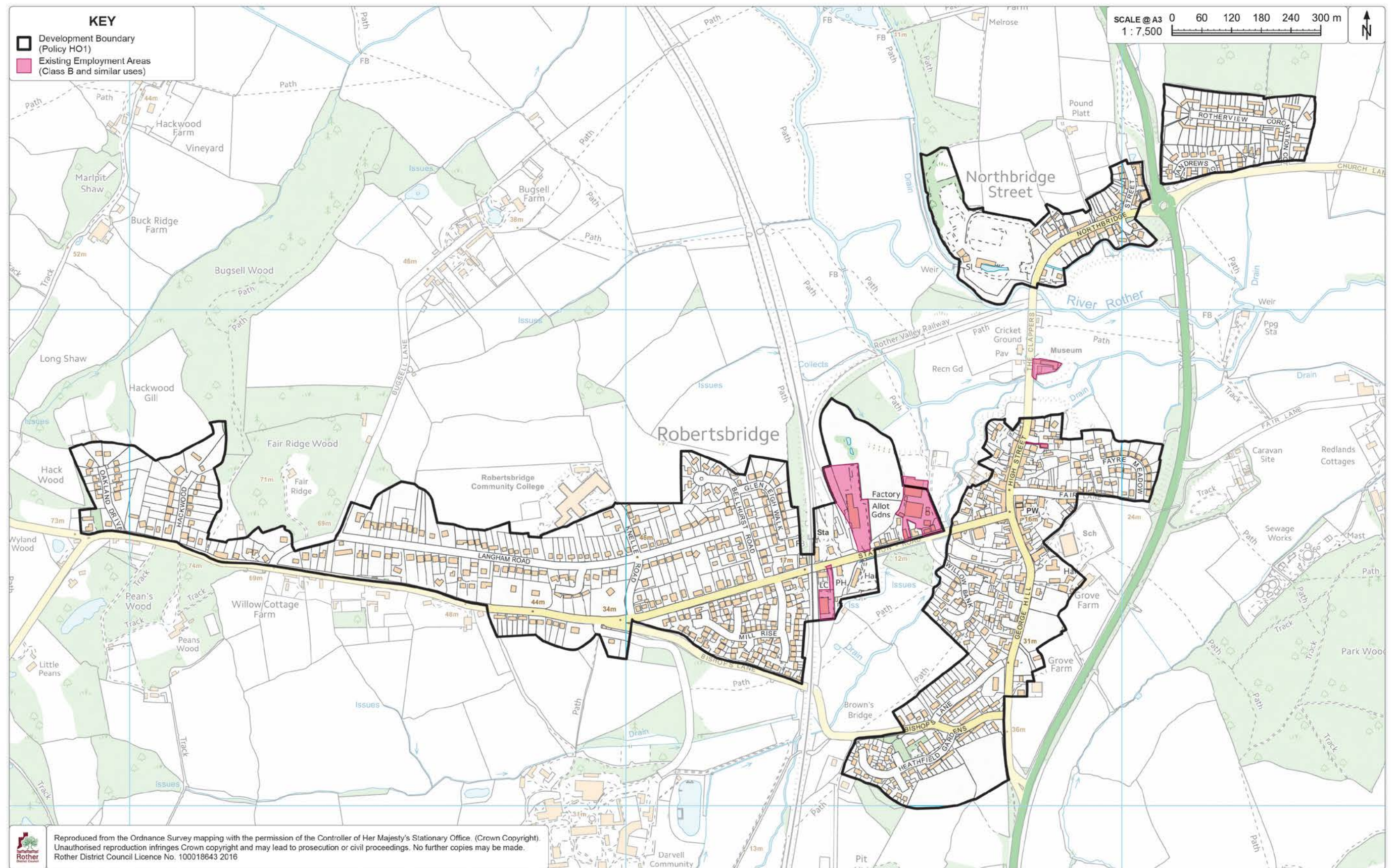
Map 6: Flood Risk





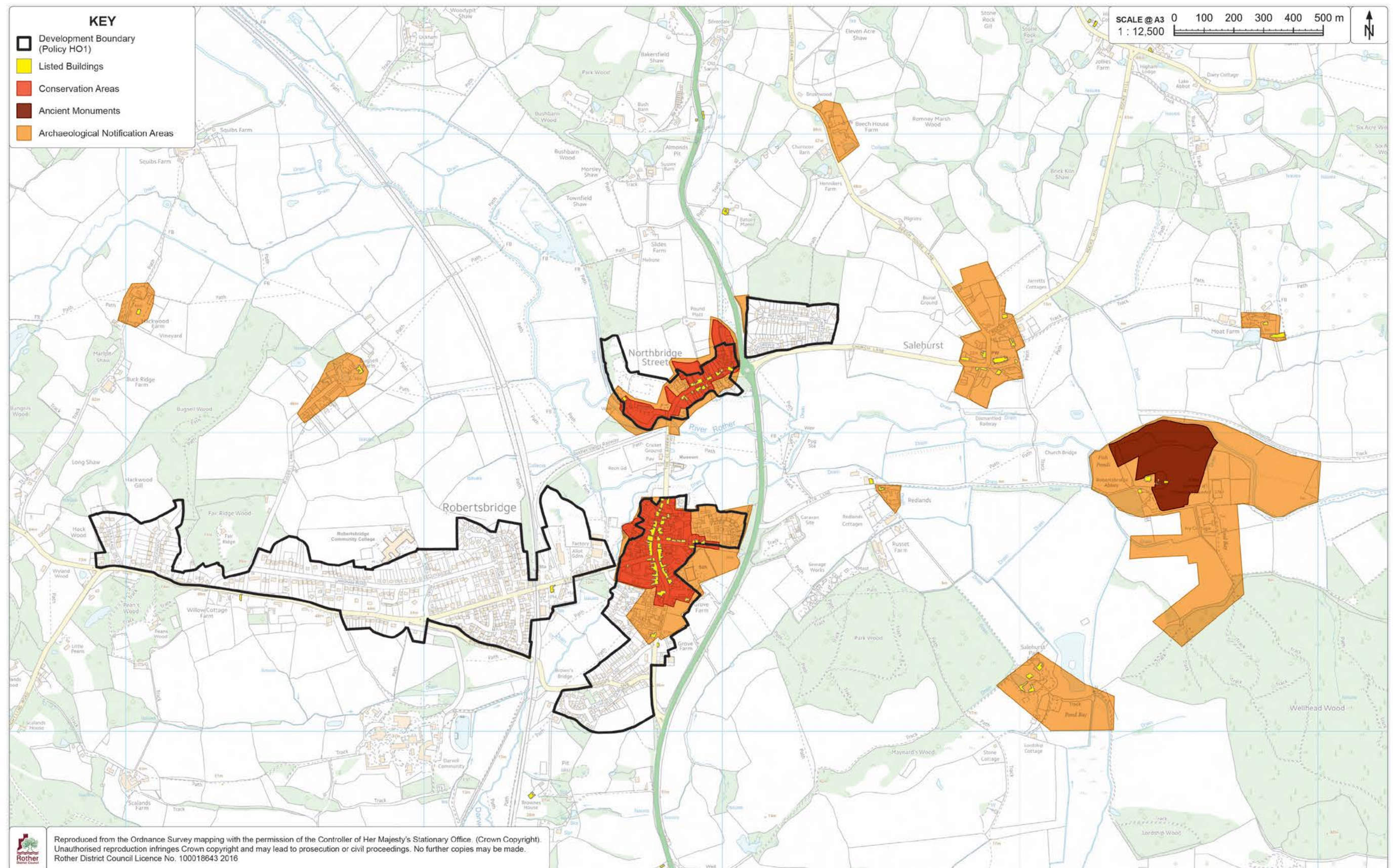
Map 7: Environment and Habitat Designations





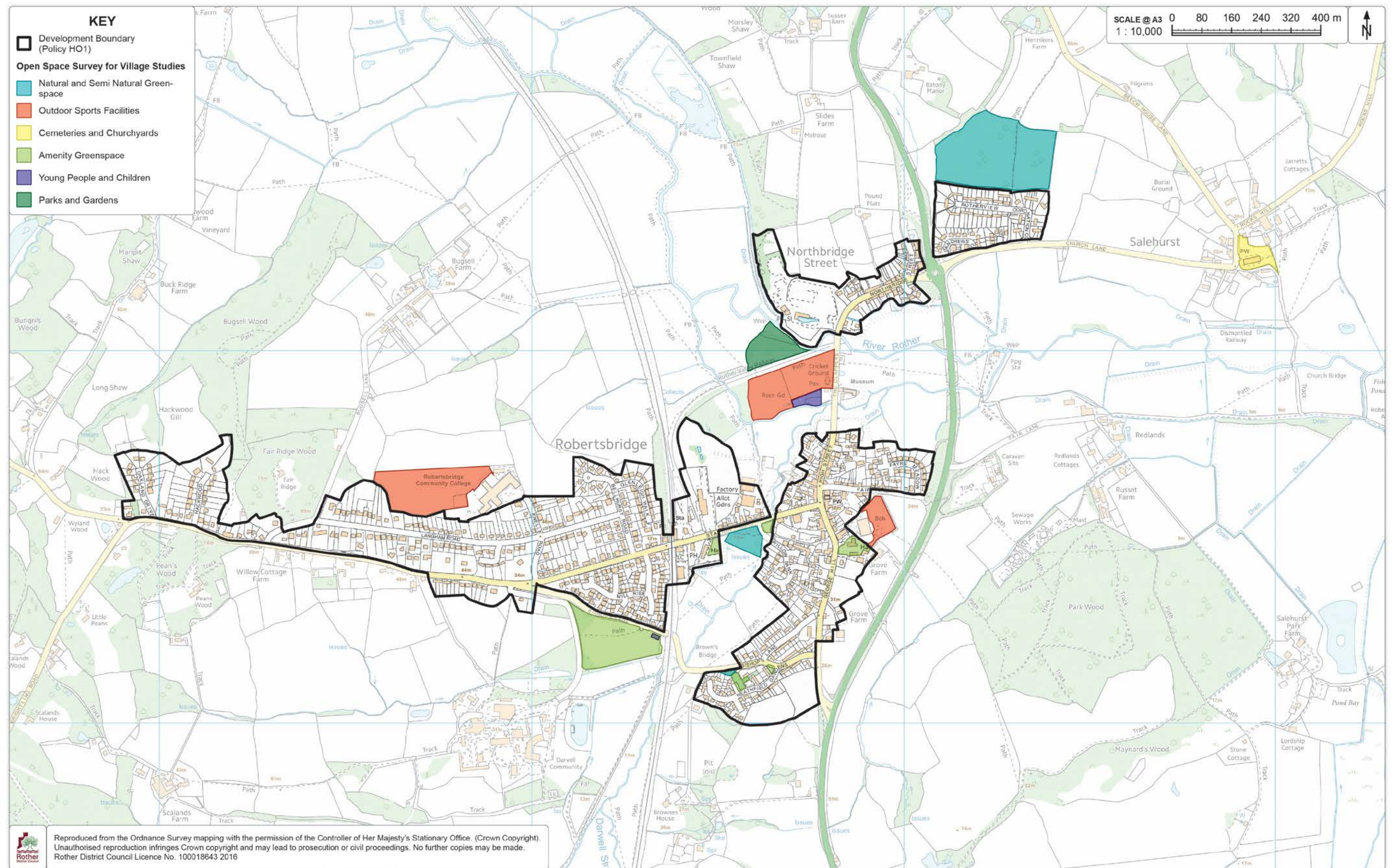
Map 8: Employment Areas





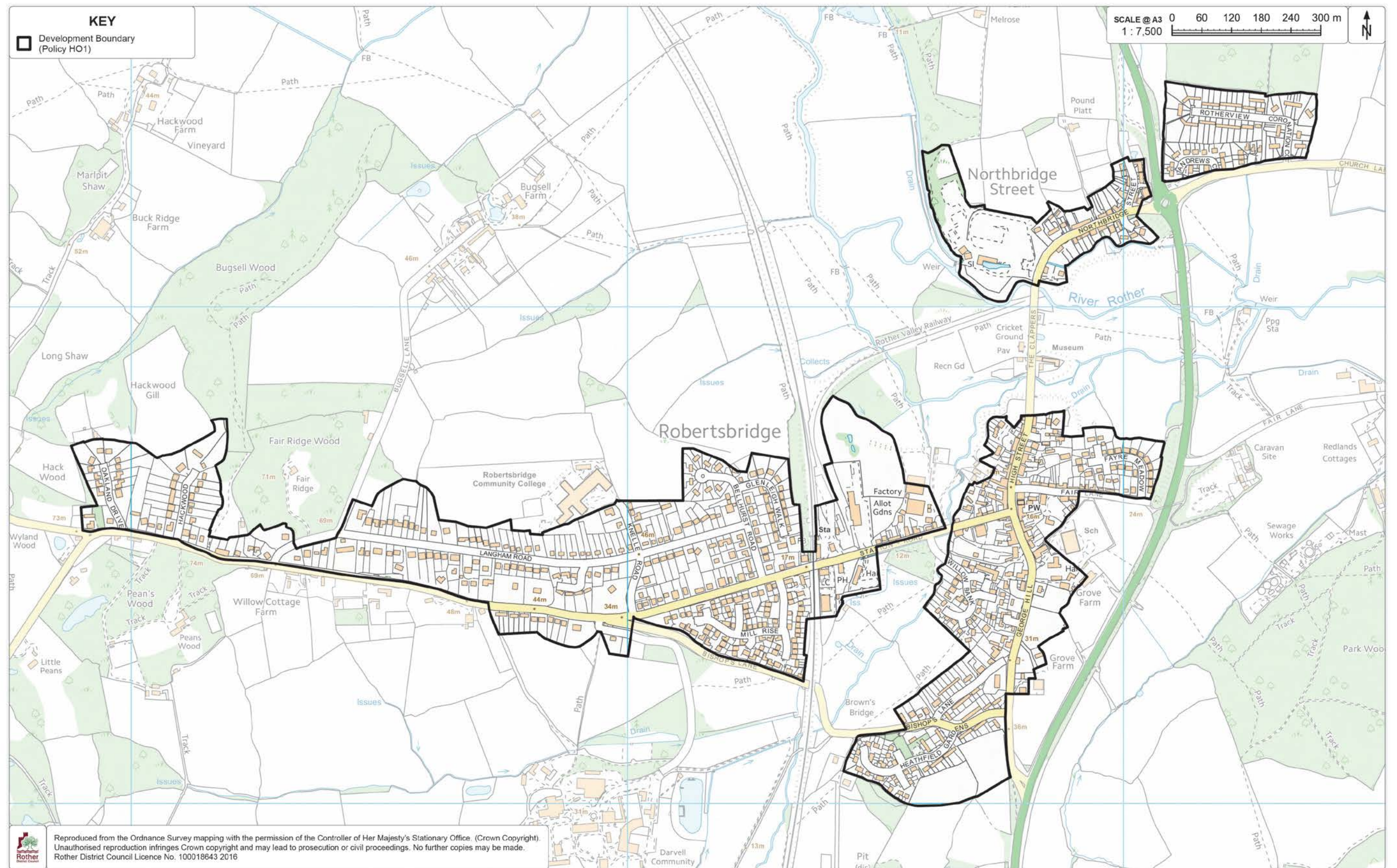
Map 9: Historic Environment





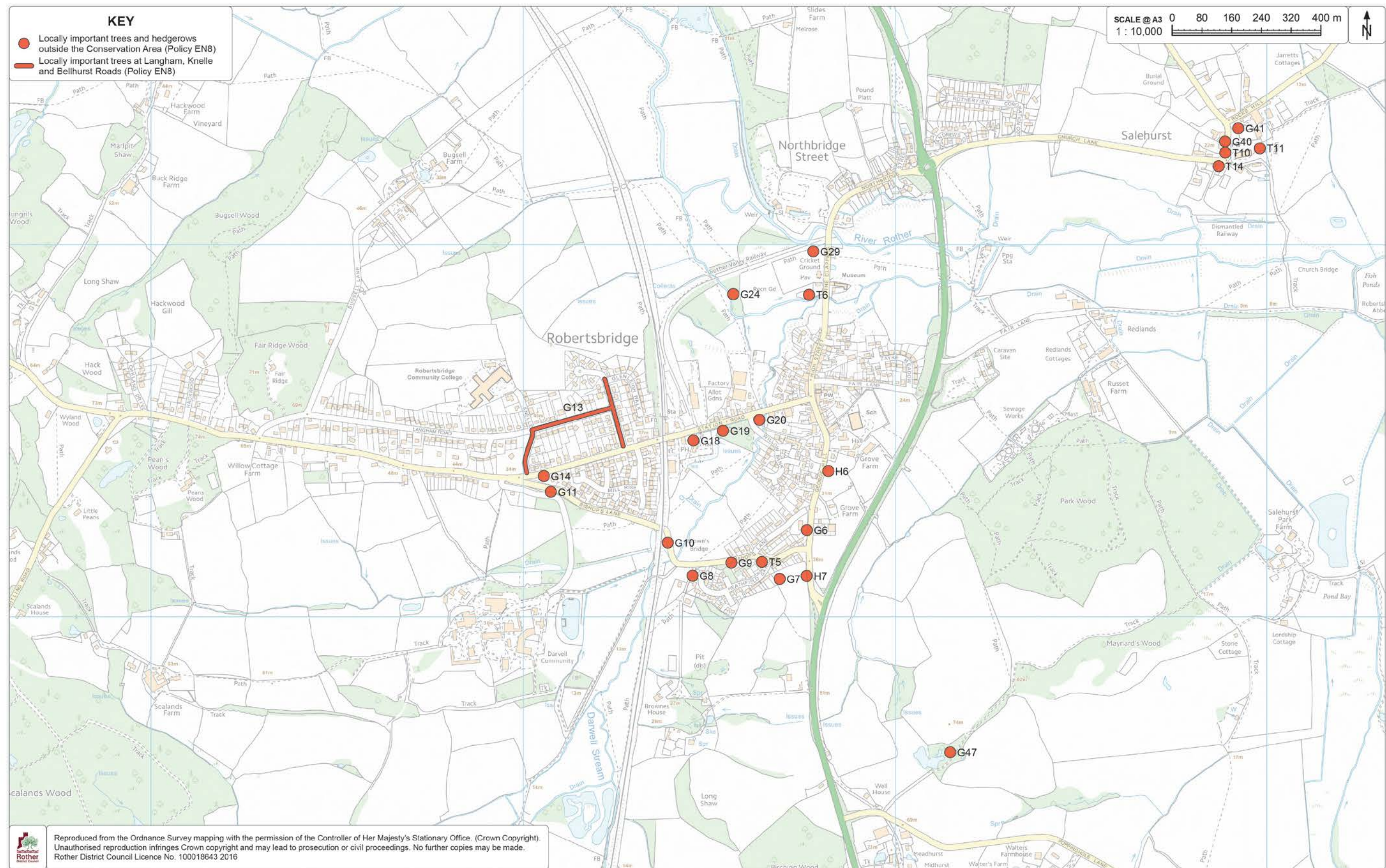
Map 10: Parks and Open Spaces





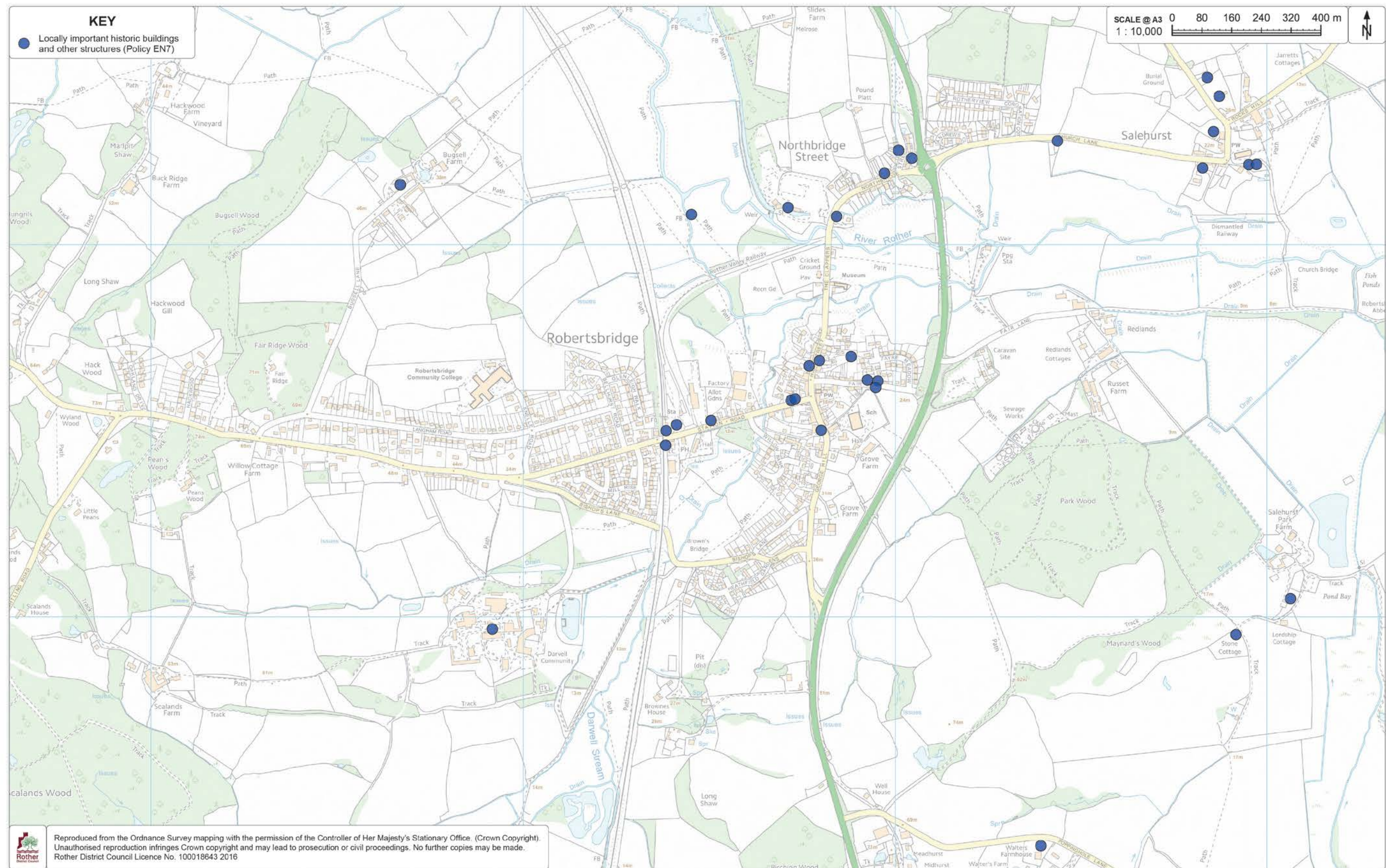
Map 11: Development Boundary





Map 12: Locally important trees and hedgerows outside of the Conservation Area





*Map 13: Locally important historic buildings and other structures*